

MIS

Continuous Flow System for

Epson Color Stylus 760 or 860 Printer

Installation Instructions



Rev 9/24/00

MIS Associates Inc.
282 Kirksway
Lake Orion, MI 48362
www.inksupply.com

1. Fill Cartridges With Ink

Get a place to work where you can spill a little ink and not ruin anything. Spread some newspapers down and have plenty of paper towels handy. Make sure you have good lighting.

Here is what you will need....

- Continuous Flow Cartridges, color and black with tubes attached
- 4 MIS-Syringe (10 cc)
- 4 Bottom Fill Adapters (MIS-BADPT)
- 4 Bottles of ink, one of each color (CMYK)
- 4 Rivets (MIS-Rivet)

Follow the table below for determining how much ink to inject into each chamber. The instructions for each color are identical, just the volume of ink injected is different.

Color	Volume (cc)
Black	22
Cyan	10
Magenta	10
Yellow	10

See the photo below to determine which color goes into which chamber. You must not make a mistake on this, it is vital to be correct. Use a felt tip pen and label each chamber with the correct letters.... **K, C, M, Y**.



ARC-SO20089-E = ARC-SO20191-E

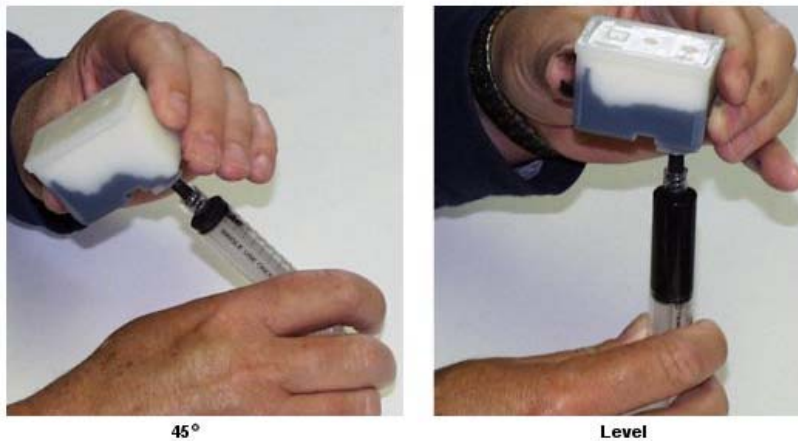


ARC-SO20108-E = ARC-SO20189-E

Follow these steps for each chamber, starting with Black.....

- A) Use the Bottom Fill Adapter and puncture the clear seal over the exit port for the color you are about to inject. Only puncture the one you are going to put ink into.
- B) Unwrap the syringe, remove the protective cap, attach the Bottom Fill Adapter to the end of the syringe. Twist it on with your fingers so it is tight.
- C) Make sure the syringe plunger is down all the way, then insert the tip of the Bottom Fill Adapter into the ink and pull ink into the syringe. Pull in a 1/2 to 1 cc more than is shown in the table above. (For the black you will have to do this in two steps, 11 cc, and 11 cc more).

- D) While holding the syringe vertical, pointed up, wrap some paper towel around the tip of the Bottom Fill Adapter, and carefully push on the syringe to remove any air trapped in the top of the syringe. If you push too hard, ink will shoot up to the ceiling, be very gentle.
- F) Now that the air is gone, adjust the volume of ink in the syringe so that you have the amount shown in the above table. Hold the syringe tip over the open ink bottle and push the syringe plunger until you have the bottom of the rubber plunger at the right mark.
- G) Hold the cartridge being filled at eye level, keeping the cartridge orientated in its normal position. Insert the tip of the Bottom Fill Adapter into the exit port on the bottom of the cartridge. Don't turn the cartridge upside down. Push the tip firmly into the exit port and slowly inject the ink into the cartridge.



Keep the cartridge at a 45 degree angle, front down, for the first half of the ink injection. Then, for the second half, keep the cartridge level. Never turn cartridge upside down.

- H) Put the cartridge down on your work surface or bench, and insert a Rivet into the **exit port** you just filled. Don't turn the cartridge upside down. Make sure the Rivet is all the way in, so the head is touching the cartridge. Use a paper towel and wipe any excess ink off the bottom of the cartridge. The Rivet will prevent leakage and cross contamination from other inks.
- I) Now go to the next color and repeat this process until all 4 of the chambers are full.

Take the filled cartridges and tubing to a place near your printer and set them on a flat surface. Put a pencil or some sheets of paper under the end of the cartridge so that it is perfectly level. Make sure the end of the tubes are open and not kinked or twisted.

You are done for today. Let the freshly filled cartridges age overnight. You can continue in the morning or later in the day with the next step in the process. This is important, don't try to rush it. The ink needs about 8 hours to get fully absorbed by the sponge. Any bubbles or gases will come to the surface and disappear.

2. Establish Working Condition of Printer- Make sure nozzle check is perfect

With an image on your screen and paper in the printer, click on **file | print**, then on printer **properties**. When you see the **Utility** tab on the printer properties dialog box, click on it, then on **Nozzle check**. This can also be done from the Control Panel | Printers section by right clicking on the correct printer and then clicking on properties.

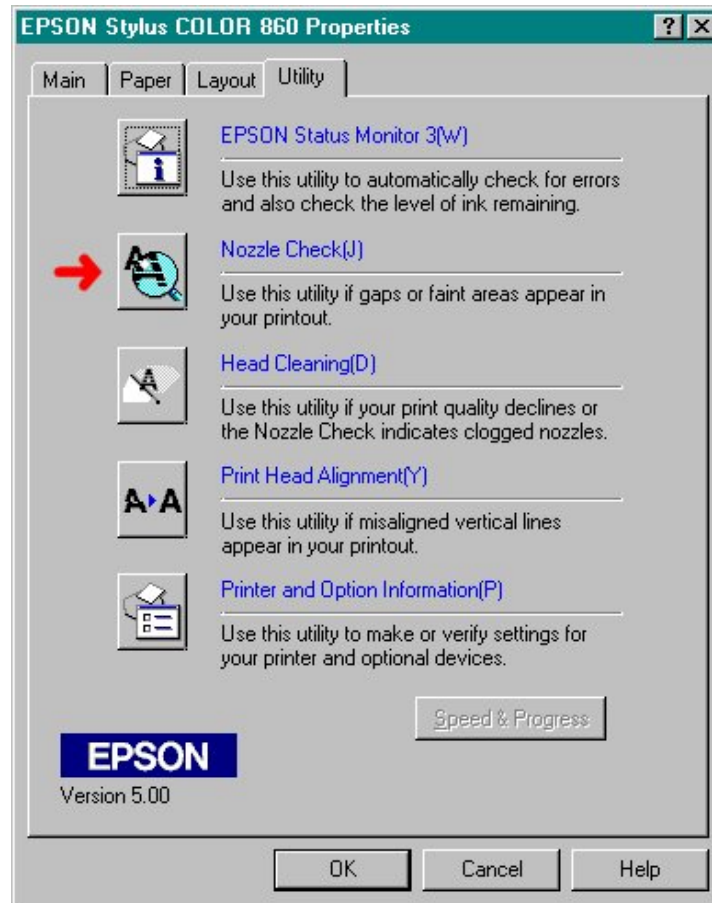
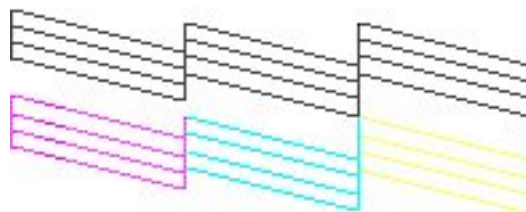


Figure 1

The nozzle check is very important. If your printer can not produce a **PERFECT** nozzle check, then there is something wrong with it and you should **not** proceed with the installation of the CFS.

Here is what a perfect nozzle check should look like....

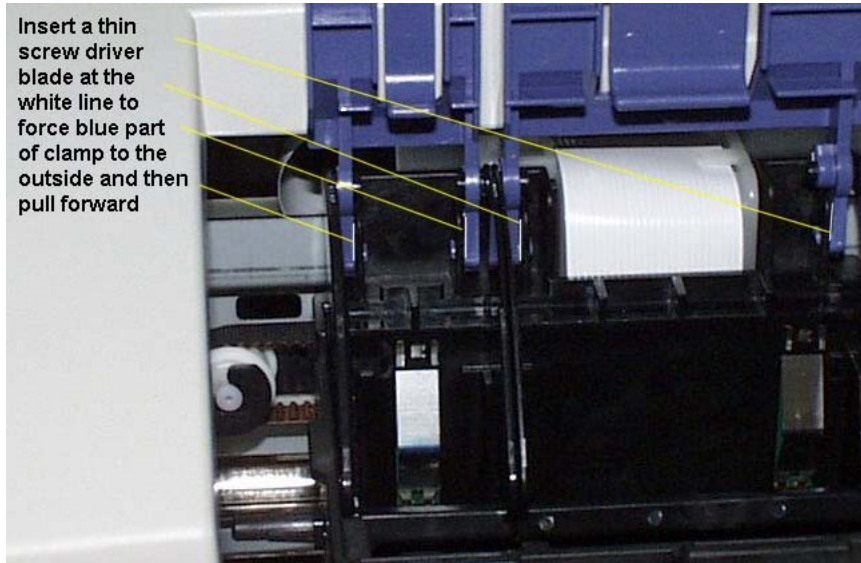


There are 48 segments in each section. Each one of these represents an inkjet nozzle on the print head. They must all be working properly before you proceed.

3. **Remove the printer cover –**

The printer cover un-snaps from the printer housing. There are no screws holding it. Just a little bit of force in the right direction and it pops off. Keep it near by to use to cover the printer if you plan on leaving it unattended for a long period of time, like a vacation break.

4. Remove Cartridge Clamps – See photo



Push the paper feed button and hold it down until the cartridge holder moves to the left. Pull the power plug out when the cartridge holder is in its left position. This will keep it from returning to the right unexpectedly.

Use a thin flat screw driver blade to remove the clamps. Be sure not to break them. You may need them some day. Remove the black clamp first. This will give you more room to remove the larger color clamp. Follow the instructions on the above photo. You may need a small flash light to help you see what is happening where the clamps attach. They will both come out clean with no damage to either the clamp or the printer, so don't be over aggressive. It is a bit of a puzzle but it can be done easily. Both the blue piece and the black piece have to be removed.

5. Install Tubing Bracket - on the right end of printer opening – See photo



Use an alcohol swab to clean the plastic and dry it with a paper towel before attaching the bracket. Once it goes down, it is there to stay, so don't put it in the wrong spot. If you have to remove it, use a wide blade screwdriver and twist it under the bracket.

6. Prepare Cartridges for Installation

Put some newspaper or paper towels in front of your printer.

Do not remove foil pull tabs from top of cartridges. This is important.

Use a small flat blade screwdriver and remove the MIS Rivets from the bottom of the cartridge. Some ink may drip out onto the paper. This is ok. Don't let the paper wick the ink out. Soft paper towel or cloth in contact with the exit port should be avoided.

After all the Rivets are out, wipe the bottom of the cartridge off with some paper towel.

Insert the cartridges into the cartridge holder. The felt pads on the side of the cartridges will keep them in place. Make sure they are seated down into the cartridge holder all the way.

Do not lift the cartridges off the posts or out of the cartridge holder once they are down. This will introduce a large air pocket into the print heads and may prevent the printer from working properly. This is very important.

7. Attach Ribbon Tube to Bracket

Move the cartridges to the left position, by holding in the paper feed button for 3 seconds.

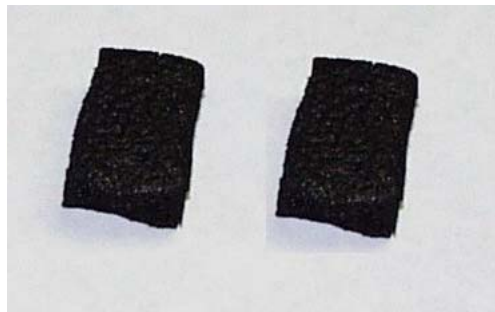
Insert tubing into the bracket so that the tube is straight and not twisted. Make sure the tubing is secure and all the way down into the bracket, use some alcohol for lubricant. Pull the tubing through the bracket to take up the slack. You will have to make some adjustments so that the tube is not too tight when the carts are in the left most position. As the cartridges traverse from left to right, the tubing should not touch the bottom of the carriage



Mark the tubing on each side of the bracket so you know where it goes.

8. Install the Switch Activators

The Switch Activators are made of ridged foam material (see photo). Push them down into the front of the cartridge holder, where the clamps used to snap into. When you plug the printer in, the lights on the front panel will go out. If the lights don't go out, you have not got the Switch Activators in far enough. Don't push down too hard or the lights will come back on. Push just hard enough to get the switch activators to the bottom.



When you are ready for the cartridges to return to the right, just push the paper feed button to start the process. The printer will return the cartridges to the right and run one cleaning cycle.

9. Set up the ink bottles

Put the tops that have the holes in them, on the 4 oz bottles of ink. Put the ink bottles in the acrylic tray as shown in the above photo. Position is not critical. Check to verify that there is a vent hole in each of the tops to let air into the bottles. If any of the vent holes are missing, you will have to make one using a drill.

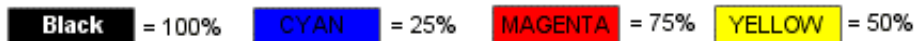


10. Insert the tubes into the bottles

Set up the bottle tray next to the right hand side of the printer. Trim the tubing length so that the tubes will make a turn into the bottle with out **rising up**. There must be $3\frac{3}{4}$ inch of tubing inside the bottle. The bottles are arranged in order K-C, M-Y from front to back. You just want to have a neat orderly tube arrangement. After you cut the tubes to length, use a black marker and make a mark on each tube $3\frac{3}{4}$ inch from the end of the tube. Insert the tubes through the larger hole in the center of the cap until the black mark is just inside the cap. **Don't cut the tubes too short.**

It is very important to get the right tube into the right color bottle or the cartridges will be ruined. Check the label on the CFS cartridge and trace down the yellow tube from the cartridge to the end of the tube. The yellow tube is the one closest to you as you look at the cartridges in the printer.

If you are installing MIS Original Quadtone inks, use the diagram below to translate from color to percent black. For the Full Spectrum Quadtones or the VM Quads, go by the label on the bottles.



Insert the end of the yellow tube through the center hole of the cap in the yellow ink bottle. Keep pushing it down into the bottle until the black mark has entered the grommet. Stop there, that puts $3\frac{3}{4}$ inches of tube inside the bottle, which is perfect.

Now do the rest of the tubes, being careful to get the right tube into the right colored bottle of ink.

You can rearrange the bottles if you find a neater sequence to keep the tubes from tangling. You can also separate the tubing from the ribbon by pulling them apart. Do what ever you have to do to get a neat arrangement.

The ink bottle tray must be on the same surface as the printer. Do not elevate the tray or set it below the printer surface. Put the tray in a position so that the ribbon tubing is not touching the paper in the feed tray.

If the bottles are too high, the ink will flood the print head and it will not work. If the bottles are too low, the print head will not have enough power to pull up the ink and it will not work. The best level for the bottles is the same level that the printer is sitting on.

11. Establish Working Condition of the Cartridges

At this point, the tubing is empty and the ends have been installed in the ink bottles.

Bring up the MIS purging image (purge4.tif) using Photoshop, Paintshop Pro, Corel or any graphics program. This image and some others, are on the diskette that came with the CFS. If you don't have this image, you can download it from the MIS website (www.missupply.com), it is on the ARCHIVAL / PURGING page.

Assuming you have the file loaded, go to **file** and click on **print**, when the printer dialog box comes up, click on **properties**, then click on the **utilities** tab. See Figure 1 on the first page.

Run a nozzle check. It most likely will not be acceptable.

Run the first cleaning cycle, then another nozzle check. You should see the ink begin to climb up the tubes.

Run second cleaning cycle, then another nozzle check. On the second cleaning cycle there is about 7 seconds worth of pumping and the ink should travel several inches up the tubes.

If the nozzle check is good, skip the third cleaning cycle.
If necessary, run a third cleaning cycle, then another Nozzle check.

If the nozzle check is **not** perfect, print three pages of the purging image (purge6.tif) then run a nozzle check. If it is not perfect run up to 3 more nozzle check-cleaning cycles until you get a good nozzle check. After 3 cleaning cycles, print a couple of pages of the purging image.

If after running a lot of cleaning cycles, and you still do not have a good nozzle check, the conclusion is that there is something wrong with the cartridges attached to the CFS. **You will have to refill your cartridges using the MIS Residual Foam Method.** This problem is caused by poorly filled cartridges that have foamy ink in them.

12. Fill Tubes With Ink by printing bar charts

Now that you have a good nozzle check, print 10 copies of the purging image, purge4.tif. After the 10 copies have finished, run a nozzle check and a cleaning cycle, then another nozzle check and cleaning cycle. After the 2nd cleaning cycle, run a nozzle check. If it is good, then print 10 more copies of the purging image. Repeat this process until the ink has reached the cartridges.

If all went well, you are almost finished. You can print some images and use the printer like you normally would use it. If you see any banding, run a couple of nozzle check – cleaning cycles. It will clear up.

When the day is done, check your tubes. The ink should be right up to the cartridges. The next morning, the ink will have retracted a little bit, as much as 4 inches back from the cartridges. This is normal. When you start to print again the ink will be drawn into the cartridges and it will function normally.

In the morning, if you see the ink has retracted more than half way back to the bottles, on any of the tubes, **this is a problem**. It means there is an air. There is no fix for this, other than a new continuous flow cartridge. We will replace it at no cost if this occurs.

You should enjoy printing with a minimum of problems. Occasionally you will have to run a couple of cleaning cycles, just like you would have to without the CFS. The bottles hold approximately 12 cartridges full of ink, when they start to get low, remove the top and add more ink. There is no vacuum in the bottles, they are vented to atmosphere. The tops can be removed at any time.

You will find that the CFS does not print well at 360 dpi. It will band after a few pages. We are working on improving this. Print your images at 720 dpi or higher.

13. Resetting the Out of Ink Switches –

On the 860 printer there are two switches in the front of the cartridge holder. These switches get released and then pushed in each time you remove the Switch Activator (previously done by the cartridge clamps). These switches control the lights on the front panel of the printer. When an out of ink condition occurs, the lights come on and the printer will not print again until the switches are reset.

Removing the cartridges is not desirable. When the cartridges are lifted off of the printer posts, inside the cartridge holder, an air pocket forms in the prechamber of the cartridge. This air pocket then gets sucked in by the print head and requires a couple of cleaning cycles to clear it out. It is a pain.

Hold the paper feed button on the printer for 3 seconds. The cartridges will move to the left position. Remove the **Switch Activators** (not the cartridges) and put them right back into position, this reset the switches. The light or lights may not go off. Push the paper feed button again and the cartridges will return to the right, the printer will run one cleaning cycle and then the lights will go off.

Let it finish the cleaning cycle, then run a nozzle check. If the nozzle check is good, you are all set to continue printing. If the nozzle check is not good, then you will have to run additional “nozzle check – cleaning cycles”. Remember only do 3, then print something and do 3 more if you have to. Always stop when you get a good nozzle check.

Please feel free to call (248-814-9398) for technical assistance at any time or email us at CFS@inksupply.com. We will be glad to help. There is also a lot of information on our website on the CFS FAQ page.... <http://www.inksupply.com/index.cfm?source=html/cobrafaq.html>

WORDS OF WISDOM FOR USING YOUR NEW CONTINUOUS FLOW SYSTEM

Each morning before you print anything, run a NOZZLE CHECK.

Find this on Control Panel → Printers → Right Click on printer icon → click on PROPERTIES → click on UTILITY tab → click on NOZZLE CHECK.

If the Nozzle check is not perfect, every horizontal line segment must be there, then run up to 3 Head Cleaning Cycles. Check the Nozzles after each head cleaning. If it is OK, don't run extra cleaning cycles. After 3 cleaning cycles, print 2 copies of the bar chart... **purge4.tif**. If you need to, you can run 3 more cleaning cycles. Printing something in between prevents the print head from losing prime.

When the printer stops and one of the red lights is on, this indicates that the printer **thinks** one of the cartridges are empty. Follow the instructions on the previous page, "**Resetting the Out of Ink Switches –**"

If you have a dusty environment, reattach the printer cover. Leave it up when the printer is running. Put it down when you are not using the printer. This will help keep the dust from accumulating.

Don't let your printer set for long periods of time without printing something. The ink in the print heads can dry, especially if you are in a hot dry climate.

The ink in the tubes will retract after the printer is idle for an hour or so. This is normal. The inks may move back about 2 or 3 inches. Don't worry about it, they will be pulled up when you start printing. The weather will also cause the inks to change position. When a high pressure front is present, the inks will be closer to the cartridges. When a low pressure front is present, the inks will move back. The inks should **never** return all the way to the bottle leaving the tubes empty. This indicates that there is an air leak. Call us if this happens.

For printing images, always use a high quality inkjet paper, either matte finish or glossy. Adjust your print settings to 720 dpi or 1440 and select the proper paper type.

Don't let the ink bottles go empty. When they start to get low, like 1/4 or less, order replacement bottles from MIS. If you order 4 oz bottles of ink, you can just unscrew the empty ones and screw the full ones back on the cap. Having the tubes out of the ink does not hurt anything as long as the printer is not printing. For better economy order an extra set of 4 oz bottles and bulk ink, in pints or gallons.

For additional information on your CFS, check our CFS page on the webstie...
www.inksupply.com